

ADLINK Technical Document

Abstract	How to Use ADLINK GPIB Peeper to Record		
OS	Windows		
Keyword	GPIB		
Related Products	USB-3488A, LPCI-3488A, LPCle-3488A		
Date	2021-10-29	No.	

- Issue Details:

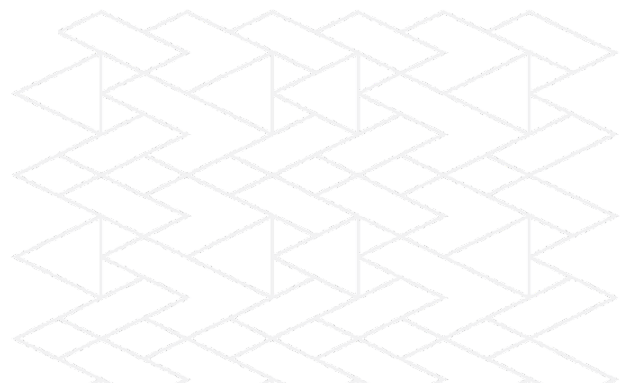
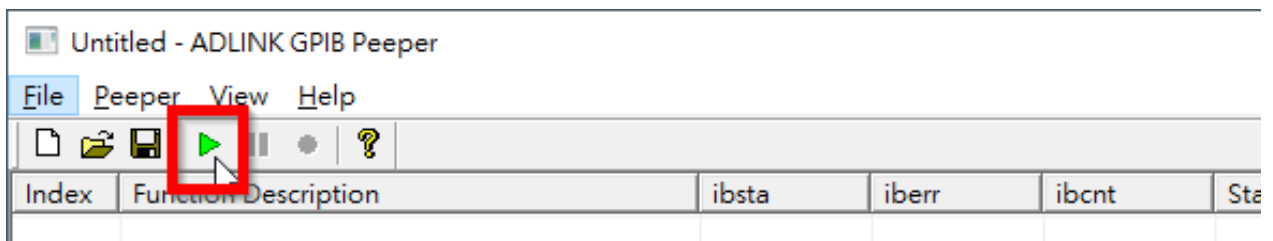
When troubleshooting issues with the ADLINK GPIB, ADLINK uses a peeper utility to record messages to a log file for analysis. This document provides a guide to using the Peeper utility.

- Solution:

Step 1: Record Messages

To record messages, do the following:

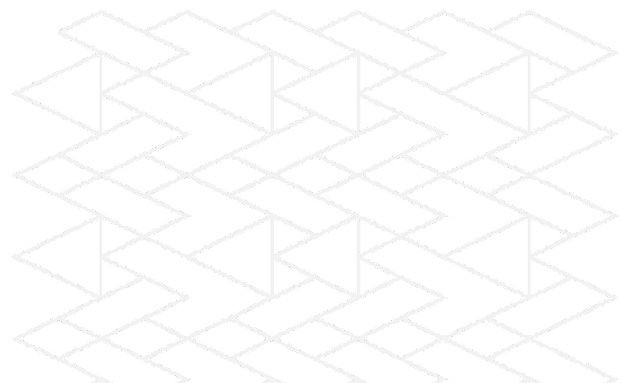
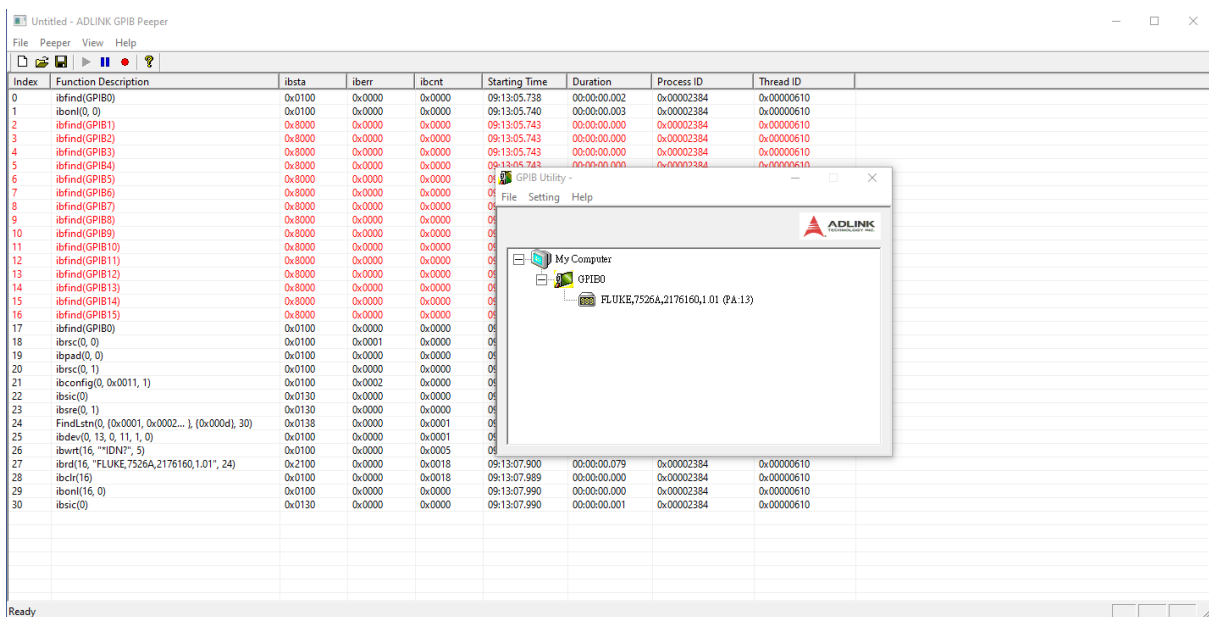
- a. Launch ADLINK Peeper utility
- b. Click the green play button



- c. Go to C:\ADLINK\ADL-GPIB\utility
- d. Click **GPIB Utility.exe**
- e. Set infinite or 1000



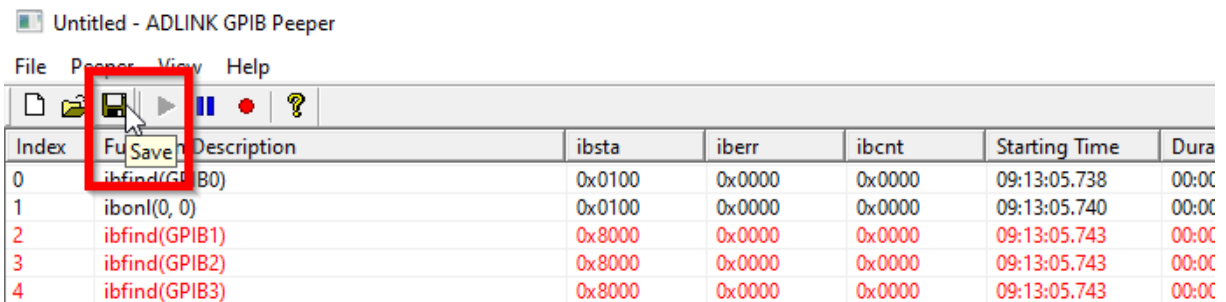
- f. Peeper begins automatically



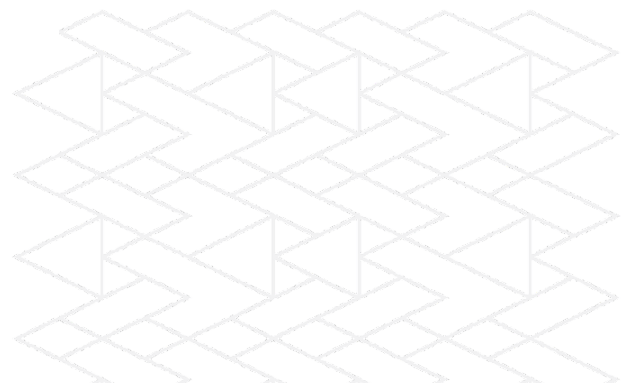
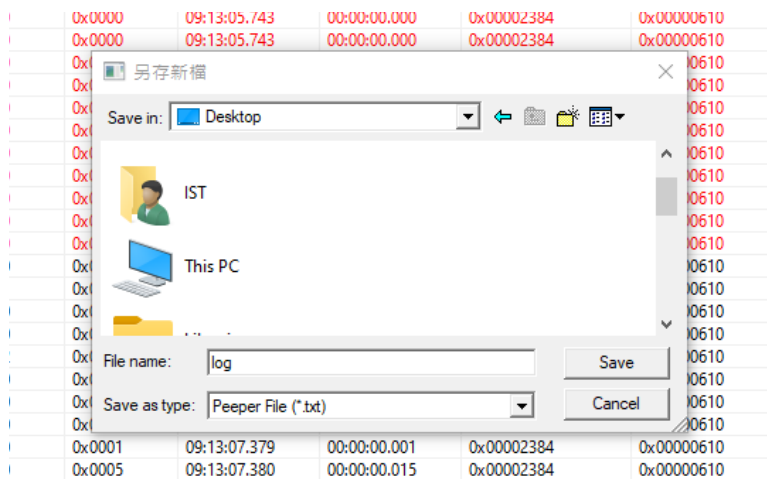
Step 2: Save to Log File

Save the recorded messages to a text file to send to ADLINK.

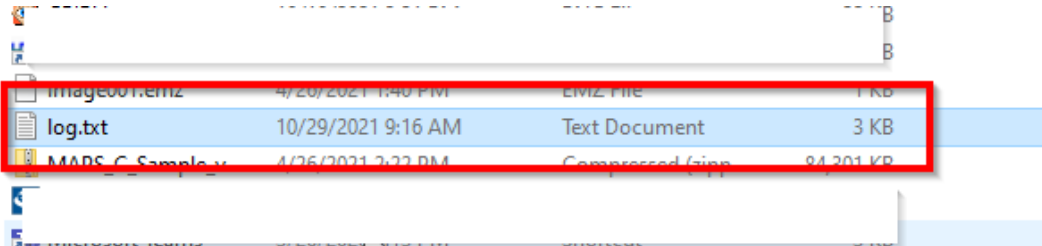
- a. Click **Save** (floppy disk icon)



- b. Select the save location
- c. Enter the file name (default: **log.txt**)
- d. Click **Save**



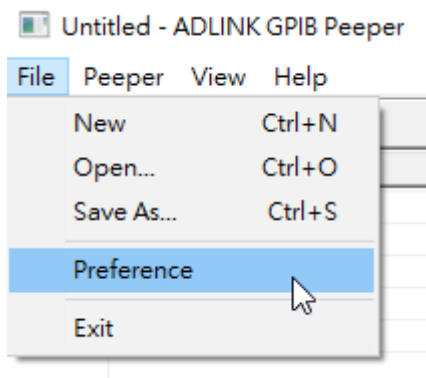
- e. Send the saved text file to ADLINK for analysis.



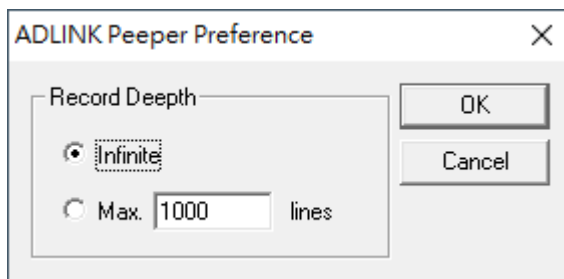
Step 3: Set infinite record

ADLINK needs to get the detailed data information, so set the infinite log to record all information.

- a. Go to **File > Preference**



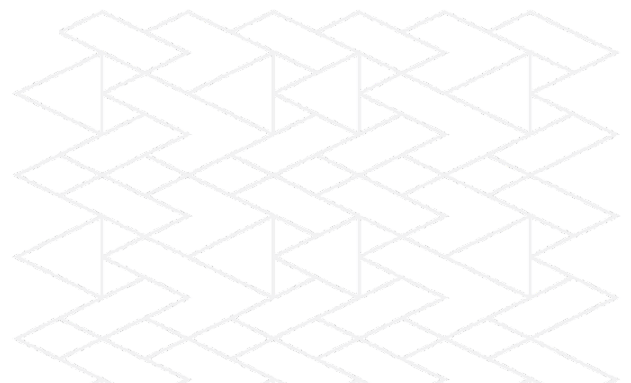
- b. Select **Infinite** then click OK



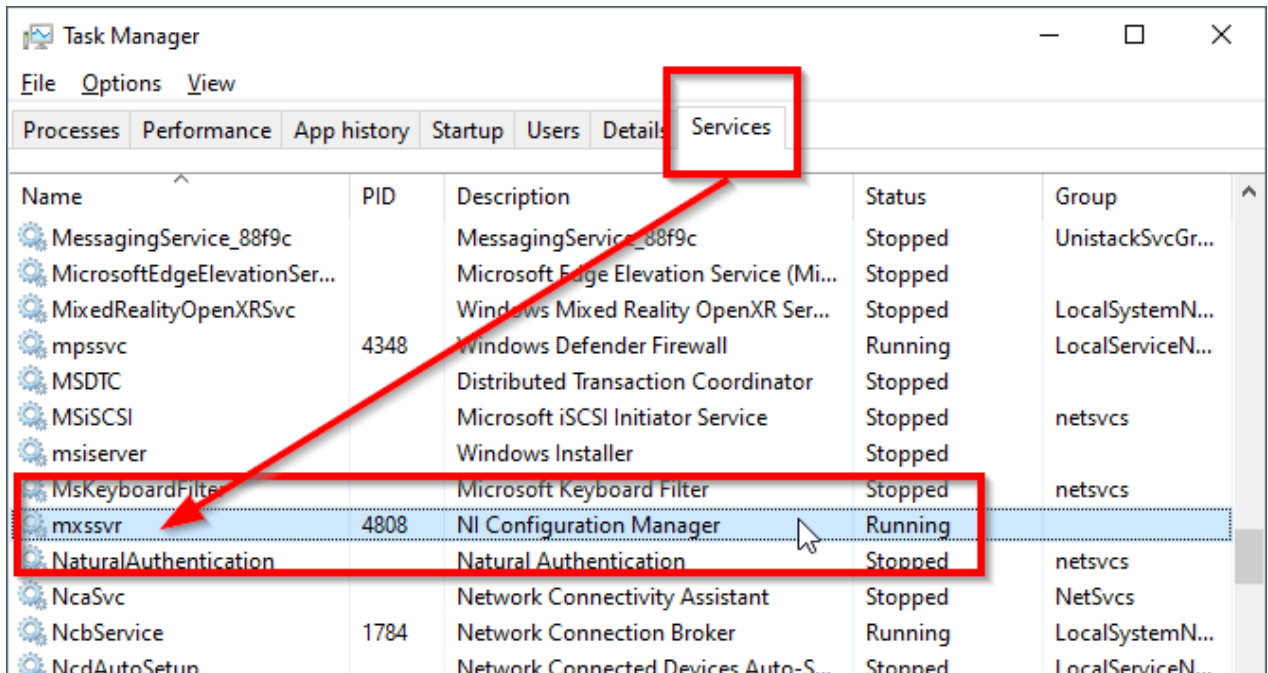
Step 4: No Data Troubleshooting

If there is no log data, there could be an issue with the NI Configuration Manager service. To remedy this situation, stop the service as follows:

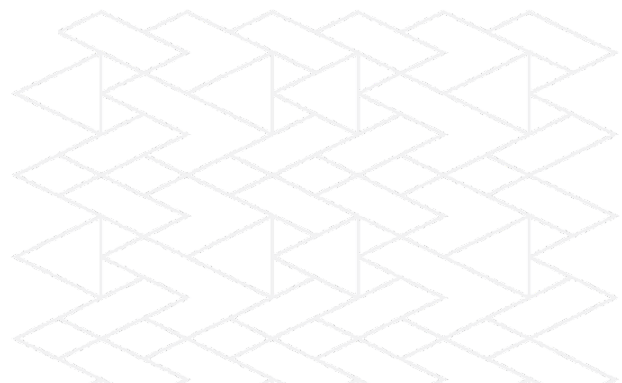
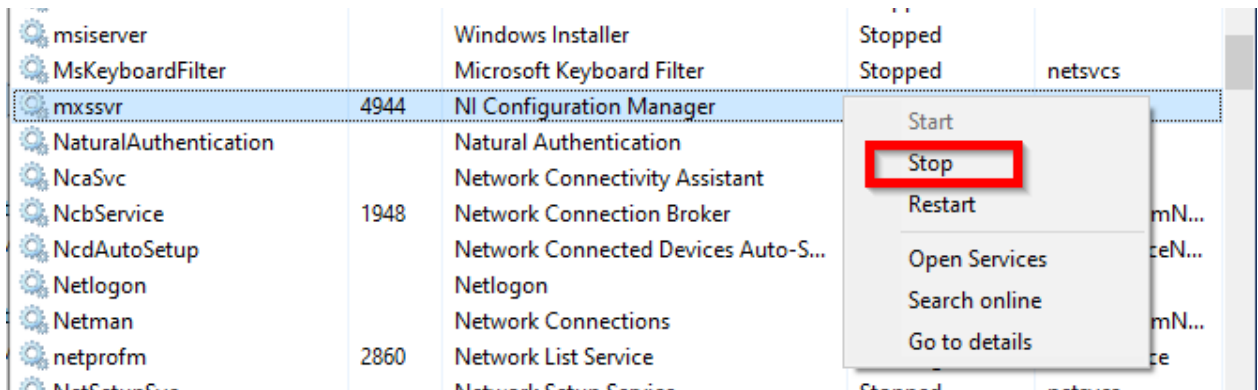
- a. Go to **Task Manager**
- b. Go to the **Services** tab



c. Find **mxssvr** (NI Configuration Manager) service and check if the **Status** is **Running**



d. Right-click **mxssvr**, then click **Stop** to stop the service



e. **Stopped** indicates that the service has stopped

msiisvc	Microsoft iSCSI Initiator Service	stopped	netsvcs
msiserver	Windows Installer	Stopped	
MsKeyboardFilter	Microsoft Keyboard Filter	Stopped	netsvcs
mxssvr	NI Configuration Manager	Stopped	
NaturalAuthentication	Natural Authentication	Stopped	netsvcs
NcaSvc	Network Connectivity Assistant	Stopped	NetSvcs

