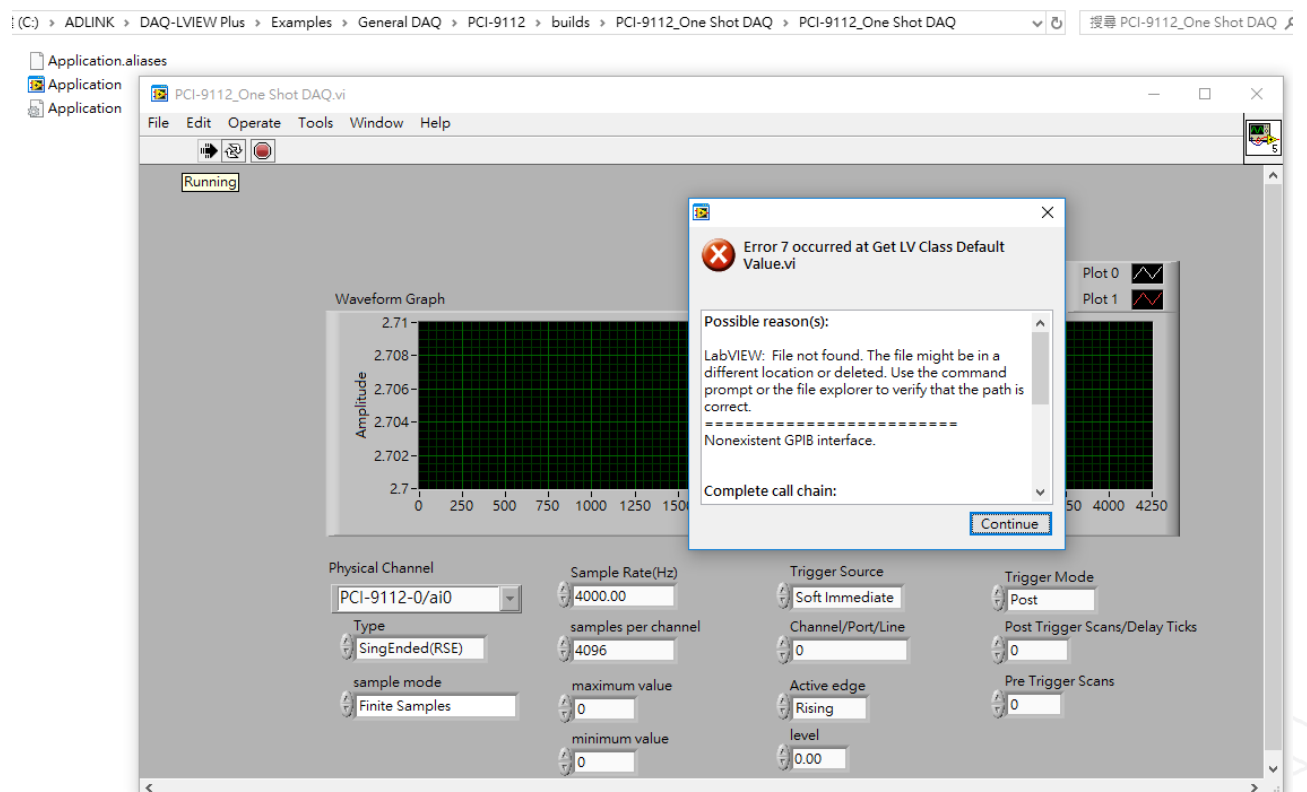


## ADLINK Technical Document

|                         |   |            |           |
|-------------------------|---|------------|-----------|
| <b>Abstract</b>         | How to build an application in LabVIEW for General DAQ                                    |            |           |
| <b>OS</b>               | Windows   |            |           |
| <b>Keyword</b>          | DAQ-LVIEW Plus, MAPS, PCIS DAQ  |            |           |
| <b>Related Products</b> | PCI-9111, PCI-9112, PCI-9113, PCI-9114, cPCI-9116, PCI-9221, PCI-9222, PCI-9223, PCI-9524 |            |           |
| <b>Date</b>             | 2021-08-27  | <b>No.</b> | 202110011 |

- Issue Details:

**Error 7** means the source file of the build application is missing the required Common Class and Device Class files. This document shows how to add the classes necessary to build an application for the General DAQ in LabVIEW.



- Prerequisites:

Please install the following in the order indicated before proceeding:

1. MAPS Core
2. DAQ-LVIEW Plus

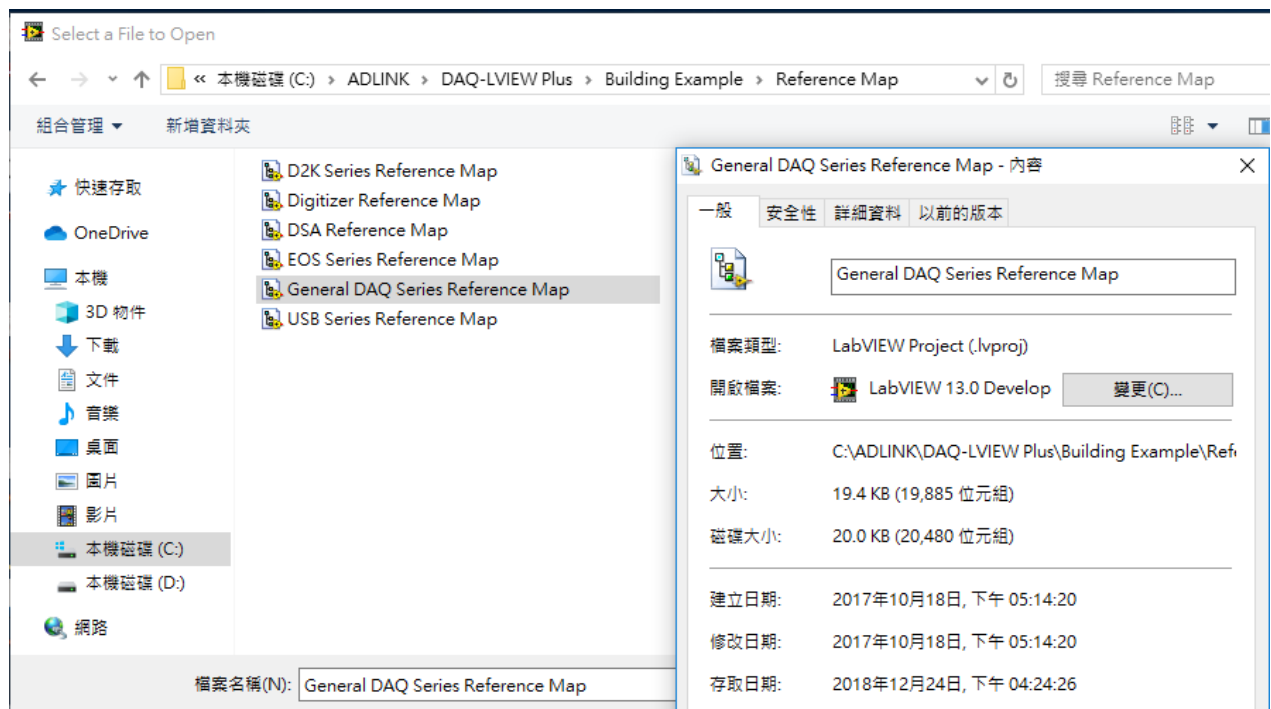
- Solution:

### Step 1:

Navigate to the appropriate folder below (32-bit or 64-bit version):

- 32-bit - C:\ADLINK\DAQ-LVIEW Plus\Building Example\Reference Map
- 64-bit - C:\ADLINK\DAQ-LVIEW Plus-64bit\Building Example\Reference Map

Launch “General DAQ Series Reference Map.lvproj”



**Step 2:**

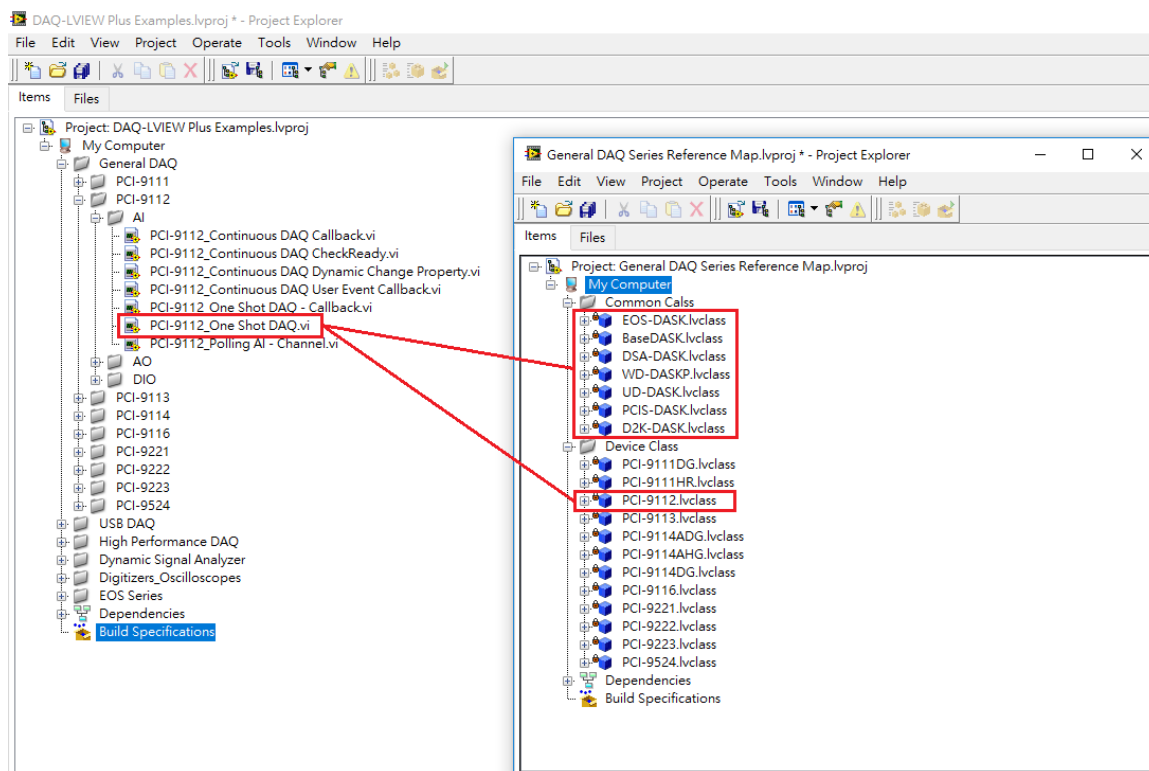
Copy the following “.lvclass” files to the development project:

- Common Class: All files
- Device Class: Specific file for the General DAQ

Example:

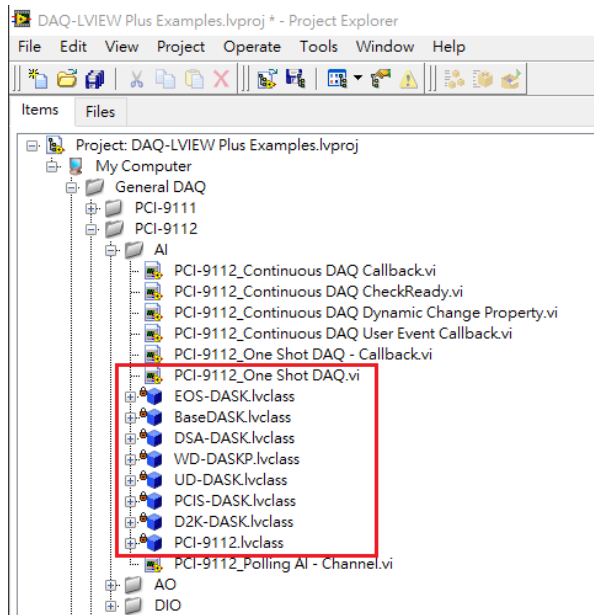
To measure the voltage on the PCI-9112, copy the following “.lvclass” files to the sample project (as shown below):

- Common Class: BaseDASK, DSA-DASK, WD-DASKP, UD-DASK, PCIS-DASK, D2K-DASK
- Device Class: PCI-9112



**Step 3:**

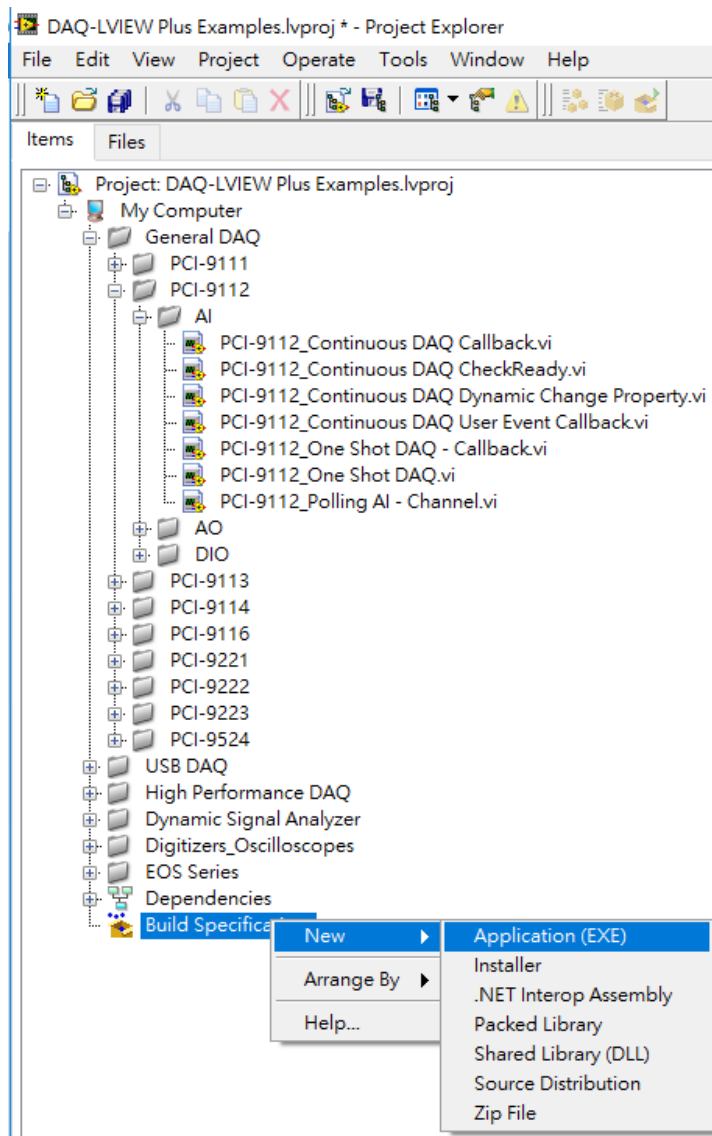
Check the project to ensure the Common Class and Device Class files were copied correctly.



**Step 4:**

Add the classes to the build specifications:

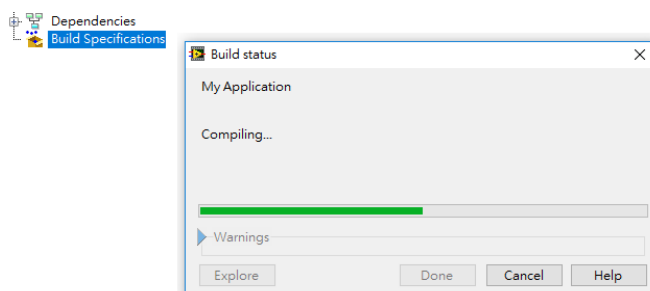
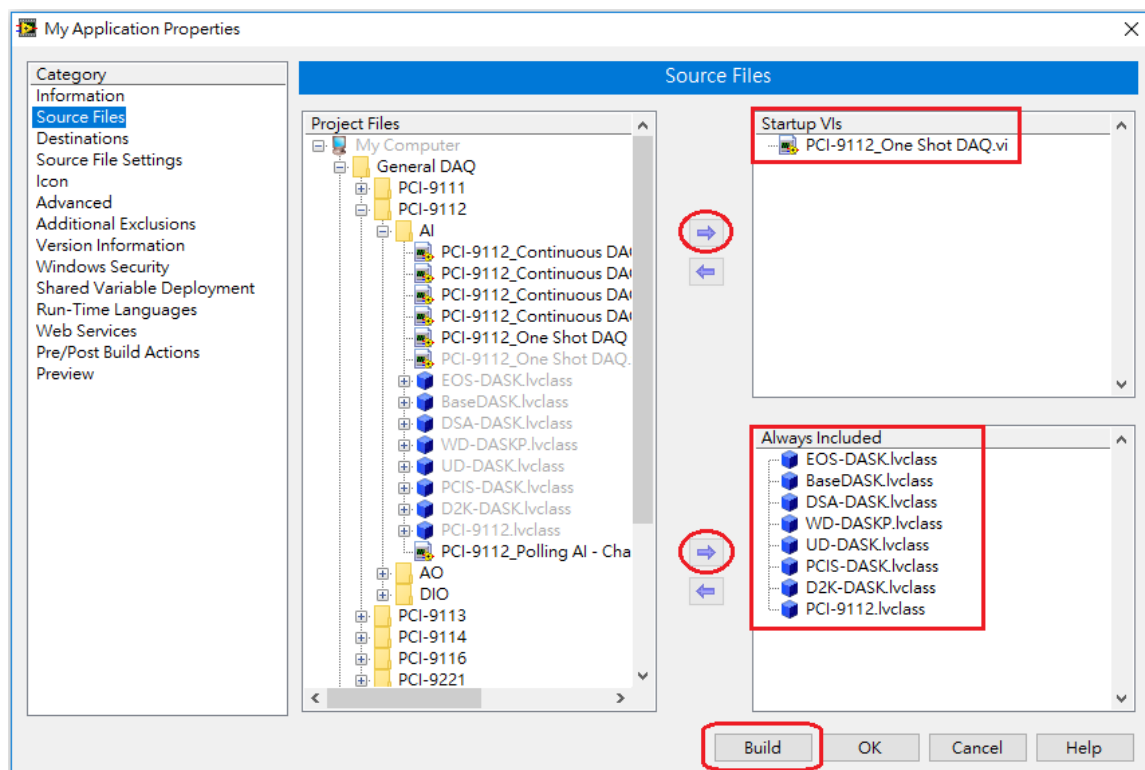
1. Right-click "Build Specification"
2. Hover over "New"
3. Select "Application(EXE)"



**Step 5:**

In the “My Application Properties” dialog:

1. Select “Source Files”
2. Select the main vi, then click the top “—>” to add to “Startup Vis”
3. Select the common class files and GeneralDAQ device class file, then click the lower “—>” to add to “Always Included”
4. Click the “Build” button



**Step 6:**

Run the Application.exe directly from the application folder.

(C:) > ADLINK > DAQ-LVIEW Plus > builds > DAQ-LVIEW Plus Examples > My Application

