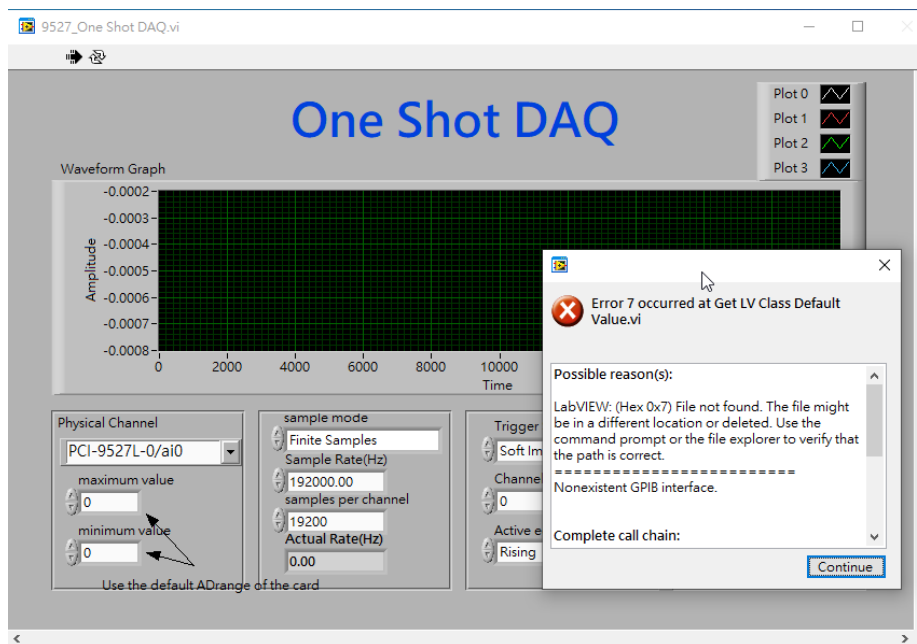


**ADLINK Technical Document**

<b>Abstract</b>	How to build an application in LabVIEW for DSA DAQ		
<b>OS</b>	Windows		
<b>Keyword</b>	DAQ-LVIEW Plus, MAPS, DSA DAQ		
<b>Related Products</b>	PCI-9527, PCI-9527L, PCIe-9529, PXI-9527, PXIe-9529		
<b>Date</b>	2021-07-30	<b>No.</b>	202110012

- Issue Details:

**Error 7** means the source file of the build application is missing the required Common Class and Device Class files. This document shows how to add the classes necessary to build an application for the DSA DAQ in LabVIEW.



- Prerequisites:

Please install the following in the order indicated before proceeding:

1. MAPS Core
2. DAQ-LVIEW Plus

- Solution:

### Step 1:

Navigate to the appropriate folder below (32-bit or 64-bit version):

- 32-bit - C:\ADLINK\DAQ-LVIEW Plus\Building Example\Reference Map
- 64-bit - C:\ADLINK\DAQ-LVIEW Plus-64bit\Building Example\Reference Map

Launch “DSA Reference Map.lvproj”

ADLINK > DAQ-LVIEW Plus > Building Example > Reference Map

名稱	修改日期	類型
D2K Series Reference Map.aliases	2021/8/13 上午 10:18	ALIASES 檔案
Digitizer Reference Map.aliases	2017/10/18 下午 05:02	ALIASES 檔案
DSA Reference Map.aliases	2021/9/15 上午 10:40	ALIASES 檔案
EOS Series Reference Map.aliases	2017/10/18 下午 05:07	ALIASES 檔案
General DAQ Series Reference Map.ali...	2017/10/18 下午 05:14	ALIASES 檔案
USB Series Reference Map.aliases	2019/9/10 上午 09:31	ALIASES 檔案
D2K Series Reference Map.lvproj	2017/10/18 下午 05:00	LabVIEW Project
Digitizer Reference Map.lvproj	2017/10/18 下午 05:02	LabVIEW Project
<b>DSA Reference Map.lvproj</b>	2020/8/13 下午 01:10	LabVIEW Project
EOS Series Reference Map.lvproj	2017/10/18 下午 05:07	LabVIEW Project
General DAQ Series Reference Map.lv...	2017/10/18 下午 05:14	LabVIEW Project
USB Series Reference Map.lvproj	2019/9/10 上午 09:31	LabVIEW Project
D2K Series Reference Map.lvmps	2017/10/18 下午 05:00	LVLPS 檔案
Digitizer Reference Map.lvmps	2017/10/18 下午 05:02	LVLPS 檔案
DSA Reference Map.lvmps	2020/8/13 下午 01:10	LVLPS 檔案
EOS Series Reference Map.lvmps	2017/10/18 下午 05:07	LVLPS 檔案
General DAQ Series Reference Map.lv...	2017/10/18 下午 05:14	LVLPS 檔案
USB Series Reference Map.lvmps	2019/9/10 上午 09:31	LVLPS 檔案



**Step 2:**

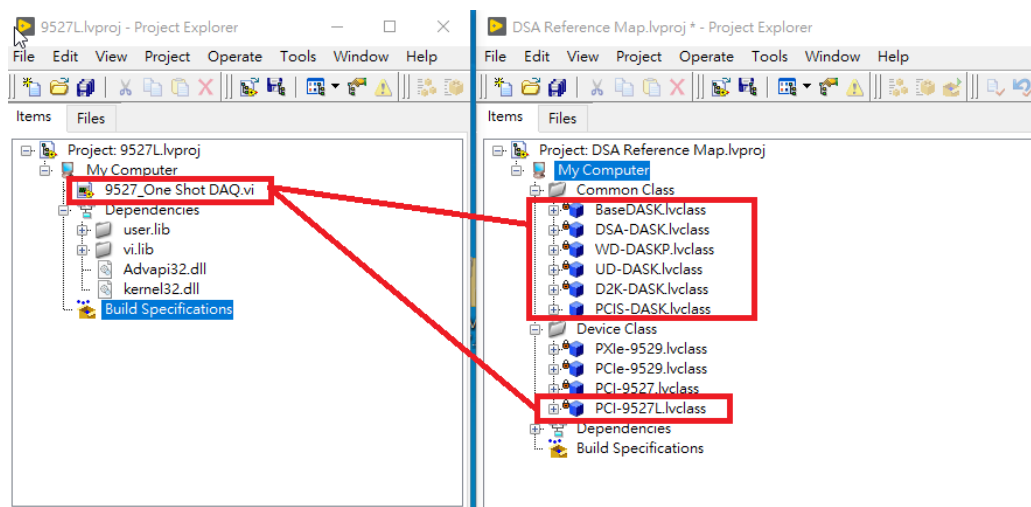
Copy the following “.lvclass” files to the development project:

- Common Class: All files
- Device Class: Specific file for the DSA DAQ

Example:

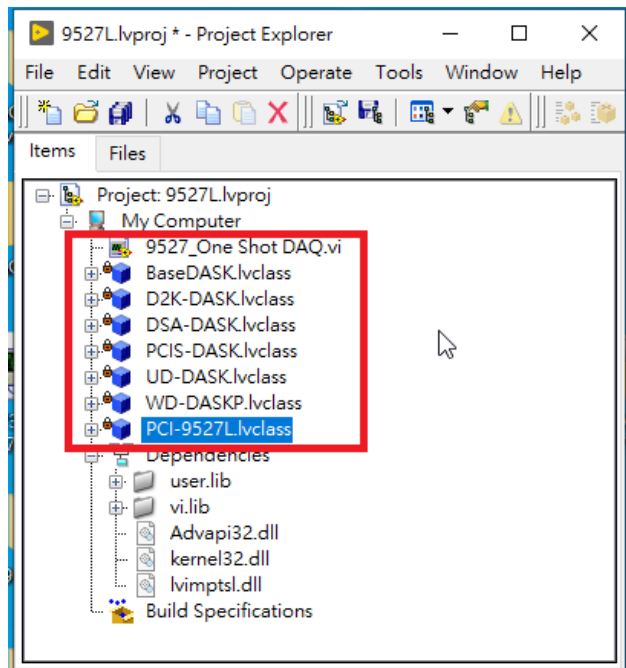
To measure the voltage on the PCI-9527L, copy the following “.lvclass” files to the sample project (as shown below):

- Common Class: BaseDASK, DSA-DASK, WD-DASKP, UD-DASK, PCIS-DASK, D2K-DASK
- Device Class: PCI-9527L



**Step 3:**

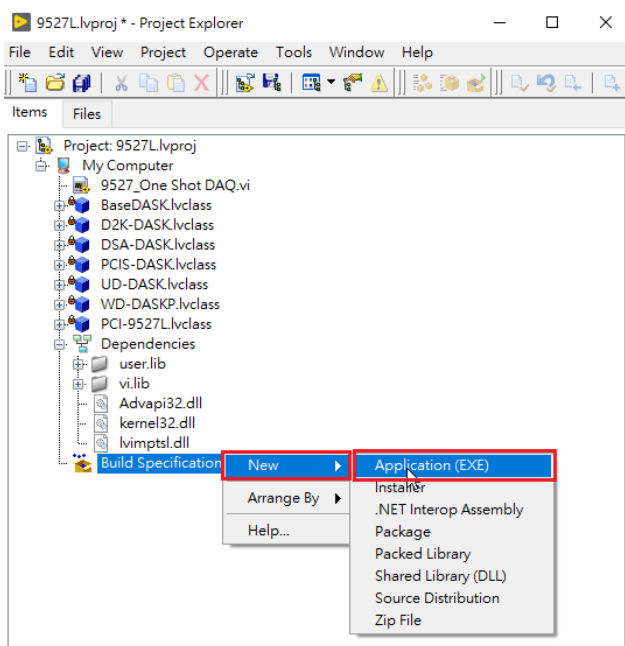
Check the project to ensure the Common Class and Device Class files were copied correctly.



**Step 4:**

Add the classes to the build specifications:

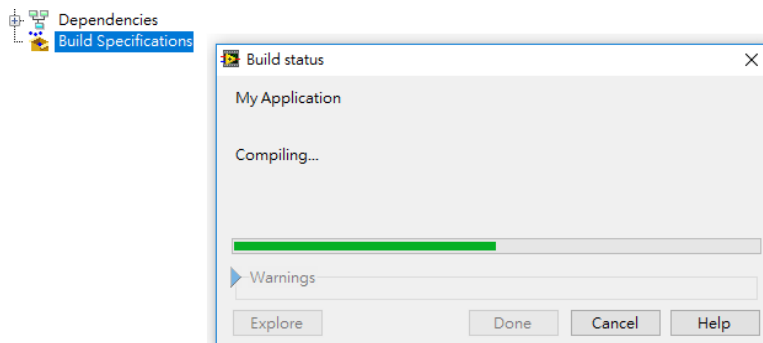
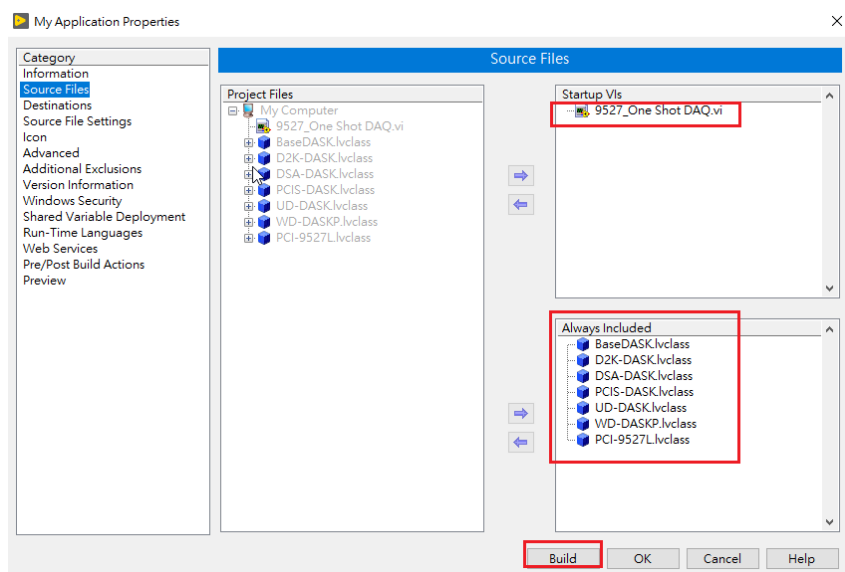
1. Right-click “Build Specification”
2. Hover over “New”
3. Select “Application(EXE)”



**Step 5:**

In the “My Application Properties” dialog:

1. Select “Source Files”
2. Select the main vi, then click the top “—>” to add to “Startup Vis”
3. Select the common class files and DSA DAQ device class file, then click the lower “—>” to add to “Always Include”
4. Click the “Build” button



**Step 6:**

Run the Application.exe directly from the application folder.

