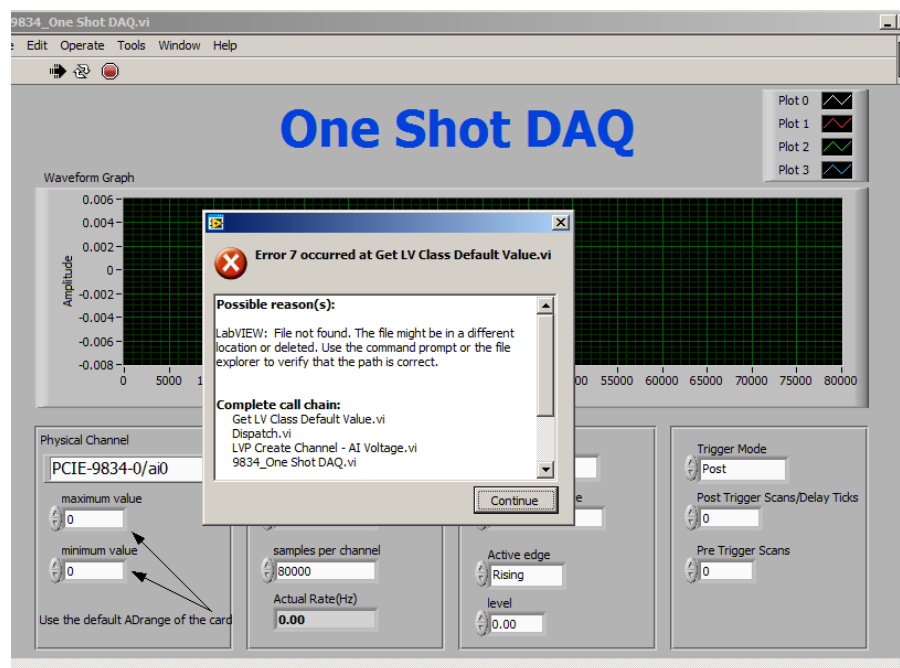


ADLINK Technical Document

Abstract	How to build an application in LabVIEW for Digitizer		
OS	Windows		
Keyword	DAQ-LVIEW Plus, MAPS, Digitizer		
Related Products	PCIe-9814, PCIe-9834, PXIe-9834, PCIe-9842, PXIe-9842, PXIe-9848, PCIe-9852, PXIe-9852, PCI-9816, PCI-9826, PCI-9846, PXI-9816, PXI-9826, PXI-9846, PCI-9820		
Date	2021-08-02	No.	202110013

- Issue Details:

Error 7 means the source file of the build application is missing the required Common Class and Device Class files. This document shows how to add the classes necessary to build an application for the Digitizer in LabVIEW.



- Prerequisites:

Please install the following in the order indicated before proceeding:

1. MAPS Core
2. DAQ-LVIEW Plus

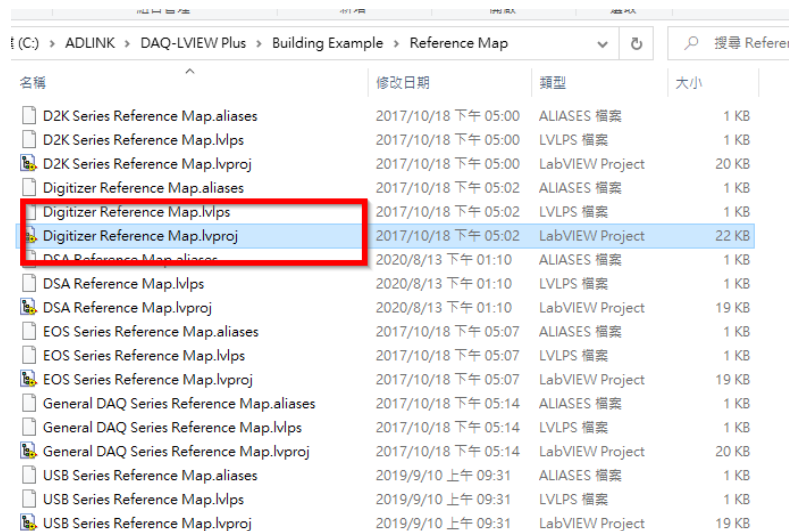
- Solution:

Step 1:

Navigate to the appropriate folder below (32-bit or 64-bit version):

- 32-bit - C:\ADLINK\DAQ-LVIEW Plus\Building Example\Reference Map
- 64-bit - C:\ADLINK\DAQ-LVIEW Plus-64bit\Building Example\Reference Map

Launch “Digitizer Reference Map.lvproj”



名稱	修改日期	類型	大小
D2K Series Reference Map.aliases	2017/10/18 下午 05:00	ALIASES 檔案	1 KB
D2K Series Reference Map.lvmps	2017/10/18 下午 05:00	LVLPS 檔案	1 KB
D2K Series Reference Map.lvproj	2017/10/18 下午 05:00	LabVIEW Project	20 KB
Digitizer Reference Map.aliases	2017/10/18 下午 05:02	ALIASES 檔案	1 KB
Digitizer Reference Map.lvmps	2017/10/18 下午 05:02	LVLPS 檔案	1 KB
Digitizer Reference Map.lvproj	2017/10/18 下午 05:02	LabVIEW Project	22 KB
DSA Reference Map.aliases	2020/8/13 下午 01:10	ALIASES 檔案	1 KB
DSA Reference Map.lvmps	2020/8/13 下午 01:10	LVLPS 檔案	1 KB
DSA Reference Map.lvproj	2020/8/13 下午 01:10	LabVIEW Project	19 KB
EOS Series Reference Map.aliases	2017/10/18 下午 05:07	ALIASES 檔案	1 KB
EOS Series Reference Map.lvmps	2017/10/18 下午 05:07	LVLPS 檔案	1 KB
EOS Series Reference Map.lvproj	2017/10/18 下午 05:07	LabVIEW Project	19 KB
General DAQ Series Reference Map.aliases	2017/10/18 下午 05:14	ALIASES 檔案	1 KB
General DAQ Series Reference Map.lvmps	2017/10/18 下午 05:14	LVLPS 檔案	1 KB
General DAQ Series Reference Map.lvproj	2017/10/18 下午 05:14	LabVIEW Project	20 KB
USB Series Reference Map.aliases	2019/9/10 上午 09:31	ALIASES 檔案	1 KB
USB Series Reference Map.lvmps	2019/9/10 上午 09:31	LVLPS 檔案	1 KB
USB Series Reference Map.lvproj	2019/9/10 上午 09:31	LabVIEW Project	19 KB

Step 2:

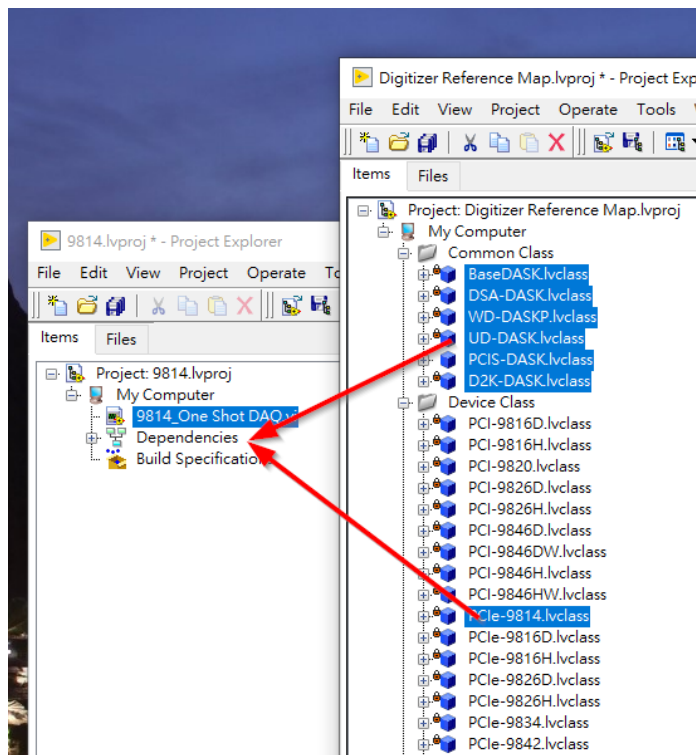
Copy the following “.lvclass” files to the development project:

- Common Class: All files
- Device Class: Specific file for the WD DAQ

Example:

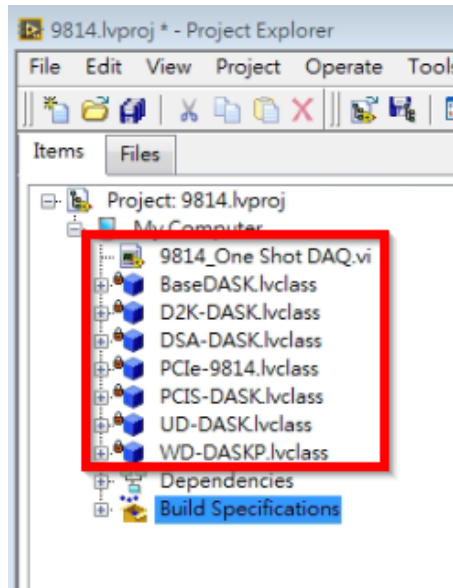
To measure the voltage on the PCIe-9814, copy the following “.lvclass” files to the sample project (as shown below):

- Common Class: BaseDASK, DSA-DASK, WD-DASKP, UD-DASK, PCIS-DASK, D2K-DASK
- Device Class: PCIe-9814



Step 3:

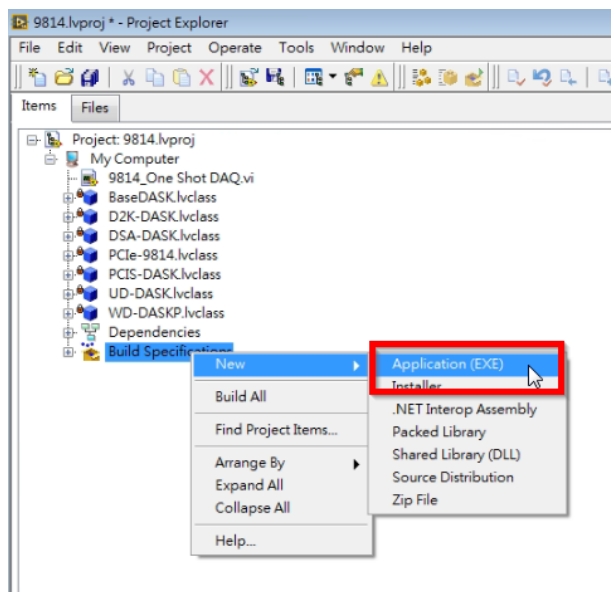
Check the project to ensure the Common Class and Device Class files were copied correctly.



Step 4:

Add the classes to the build specifications:

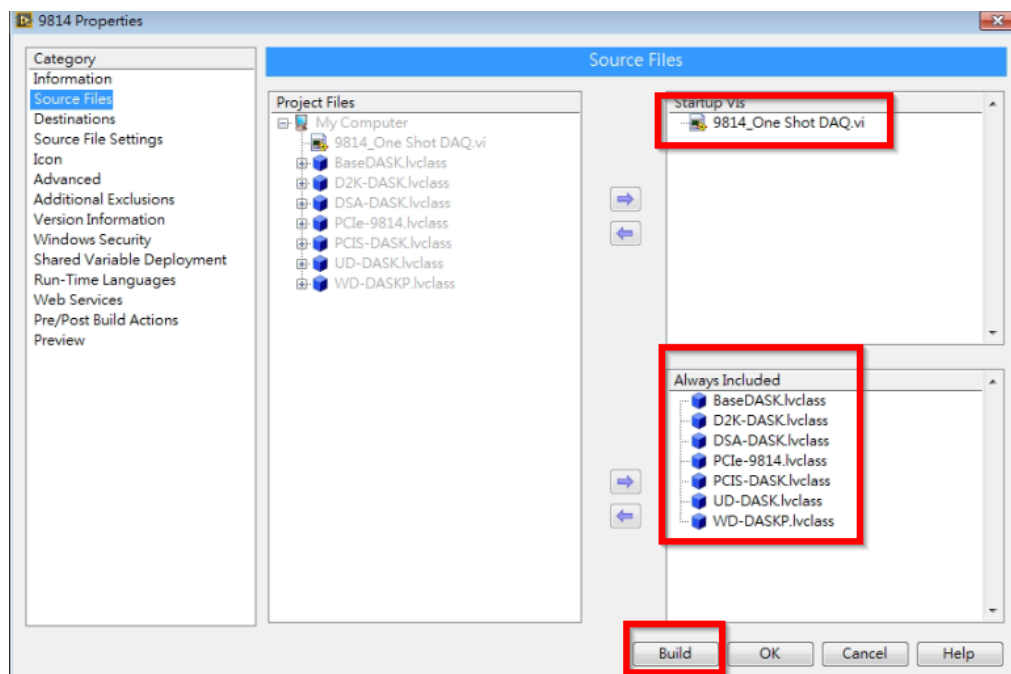
1. Right-click "Build Specification"
2. Hover over "New"
3. Select "Application(EXE)"



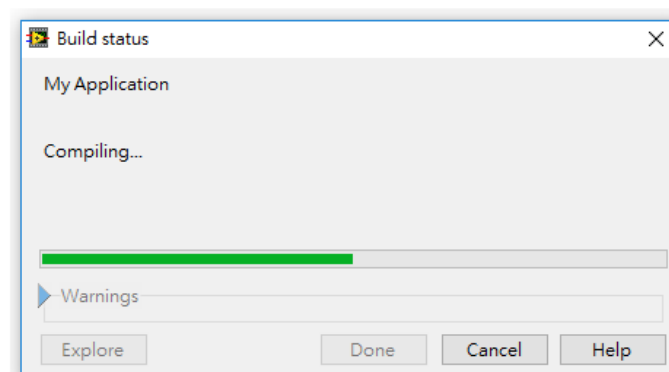
Step 5:

In the “My Application Properties” dialog:

1. Select “Source Files”
2. Select the main vi, then click the top “—>” to add to “Startup Vis”
3. Select the common class files and D2K DAQ device class file, then click the lower “—>” to add to “Always Included”
4. Click the “Build” button



Dependencies
Build Specifications



Step 6:

Run Application.exe directly from the application folder.

My Application	
名稱	修改日期
data	2021/7/27 下午 03:21
Application.aliases	2021/7/27 下午 03:22
Application.exe	2021/7/27 下午 03:22
Application.ini	2021/7/27 下午 03:22

