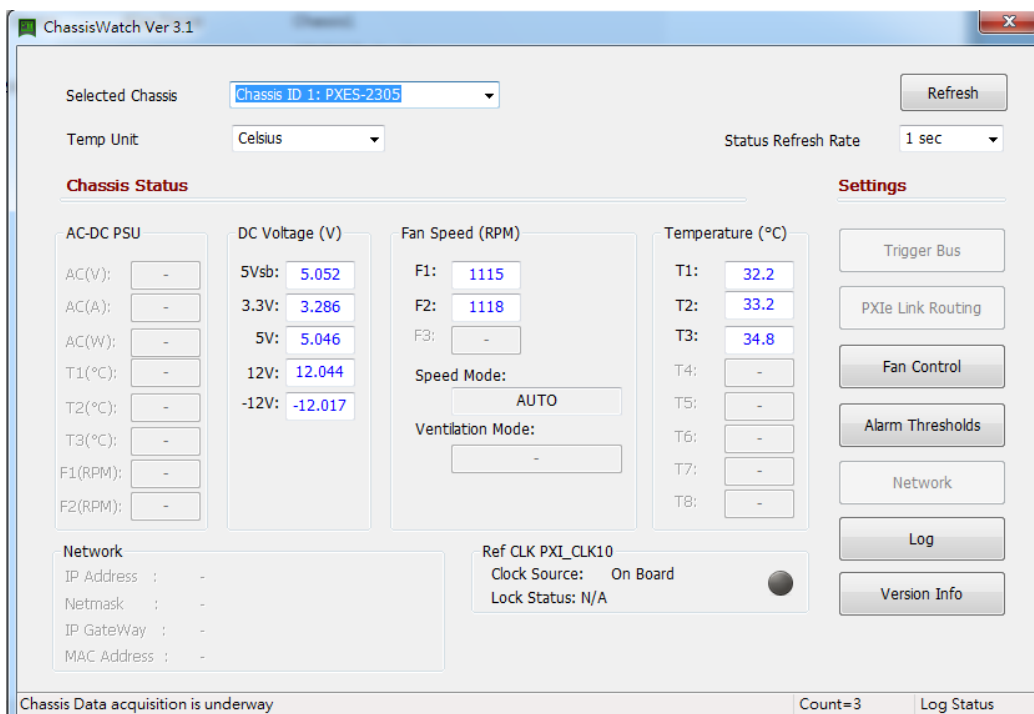


ADLINK Technical Document

Abstract	How to Configure PXI Express Chassis by ACE		
OS	Windows		
Keyword	MAPS Core		
Related Products	PXES-2785, PXES-2301, PXES-2780, PXES-2590, PXES-2314T		
Date	2021-12-01	No.	202110001

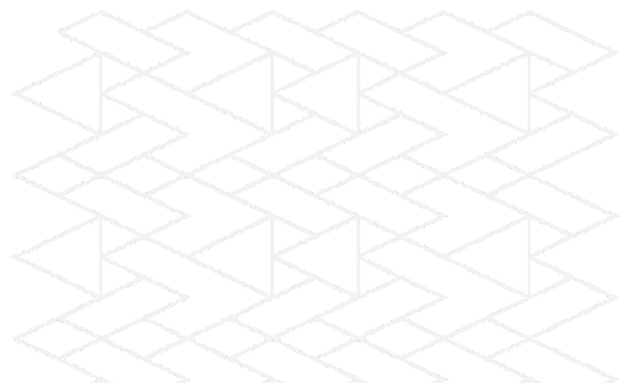
- Issue Details:

This document details how to configure the parameters for PXI Express Chassis by ACE for different applications.



- Prerequisites:

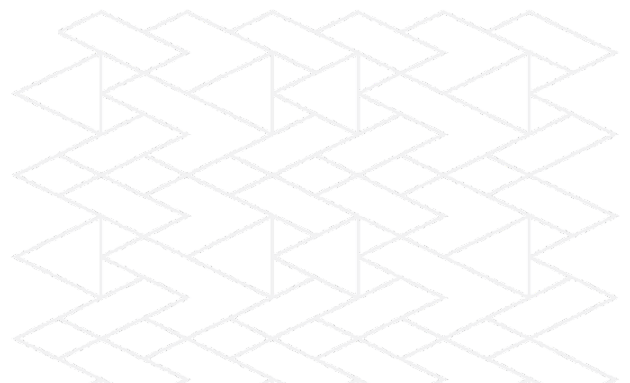
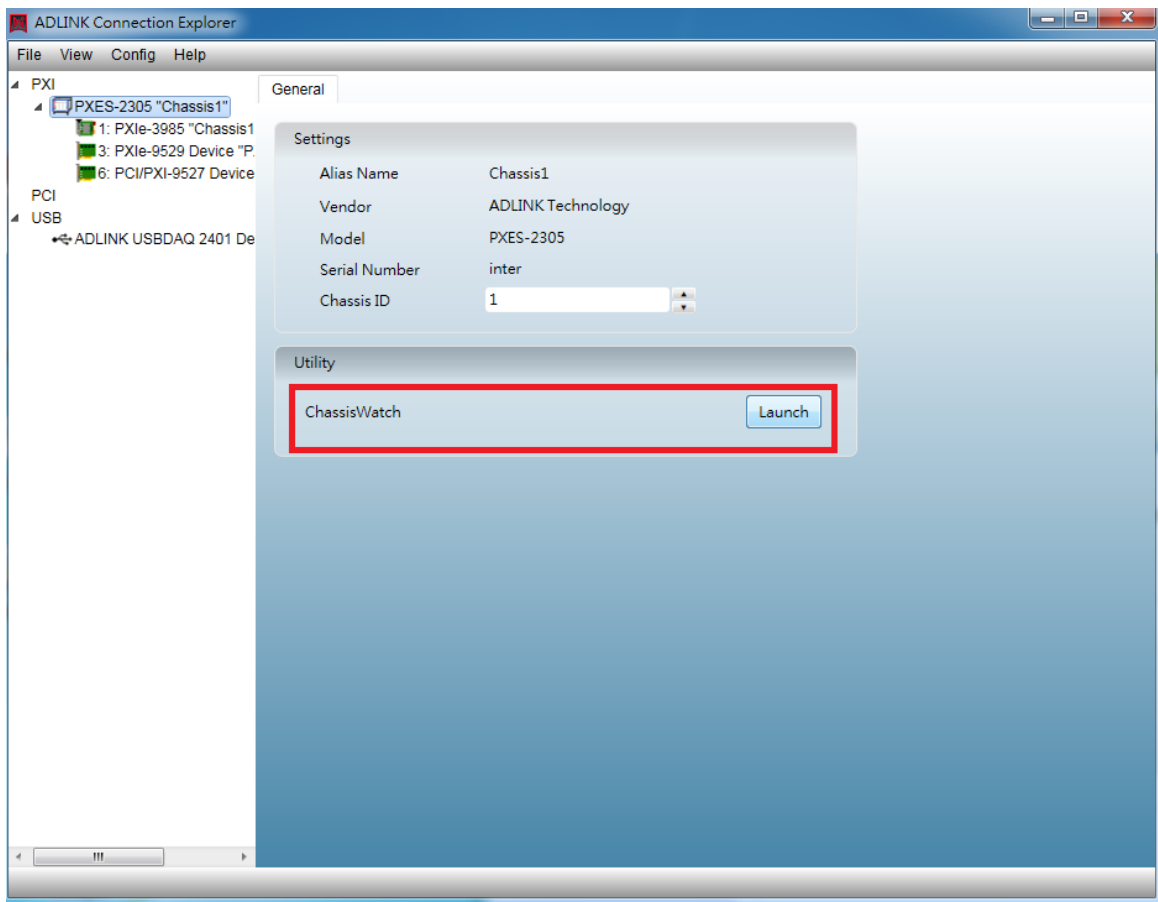
Install the latest MAPS Core before proceeding.



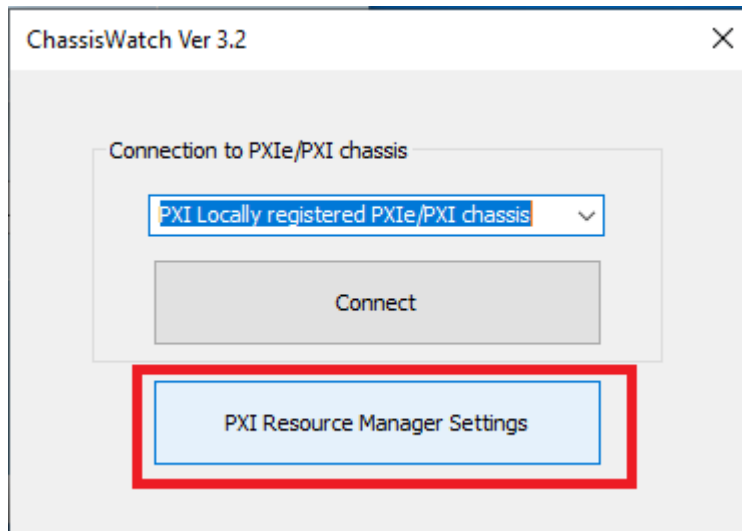
- Solution:

Step 1: Setup Connection

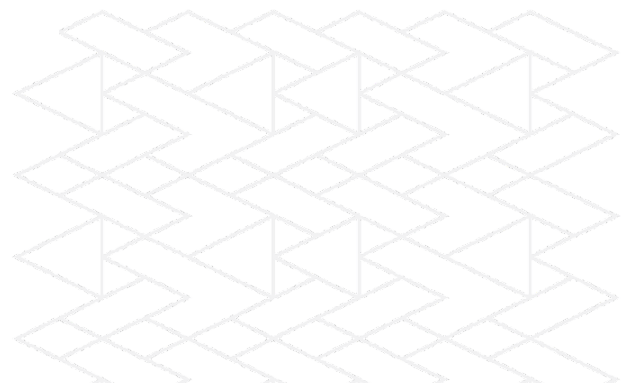
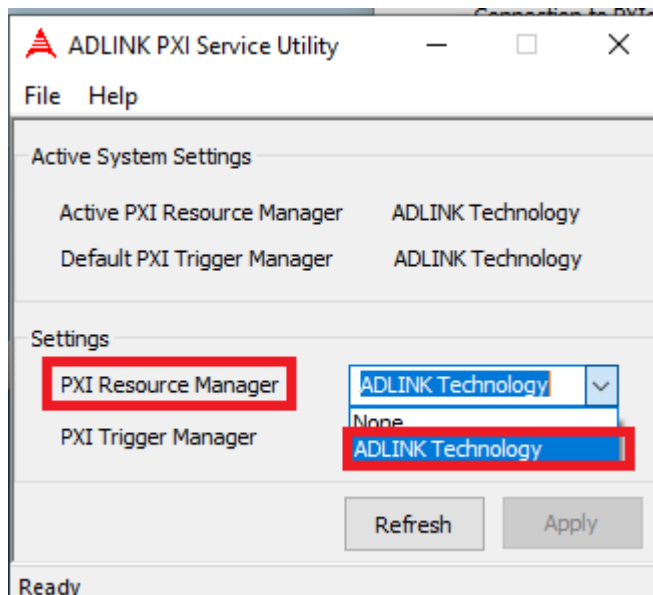
- a. Launch the ACE and click on the PXES chassis tree list and then click the **Chassis Watch** utility.

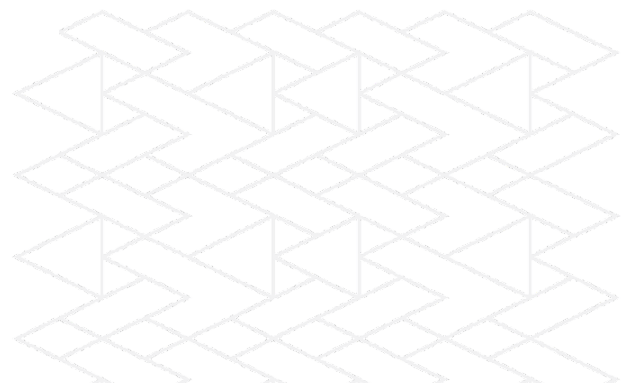
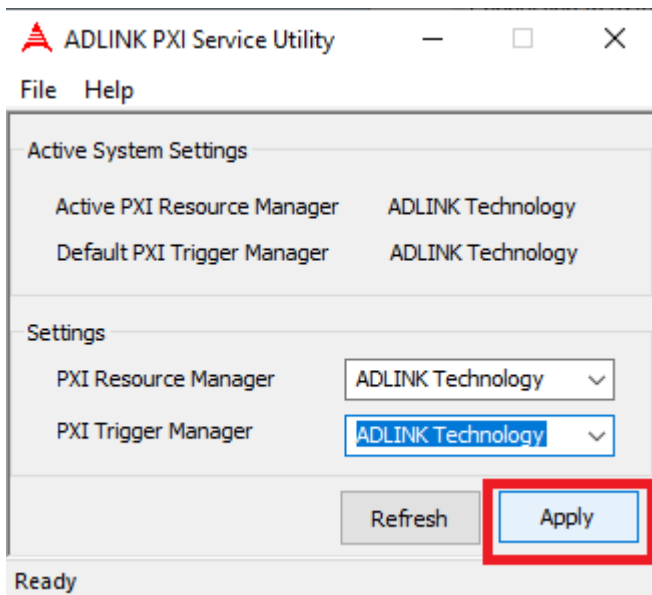
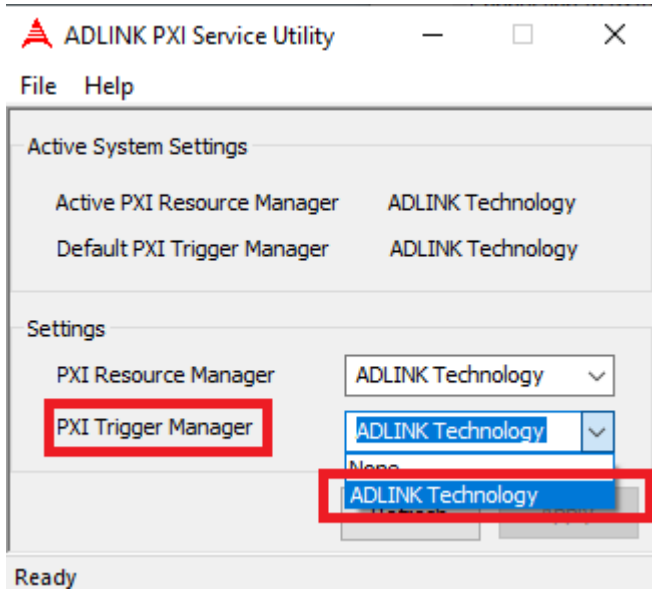


- b. Click the **PXI Resource Manager Settings** button.

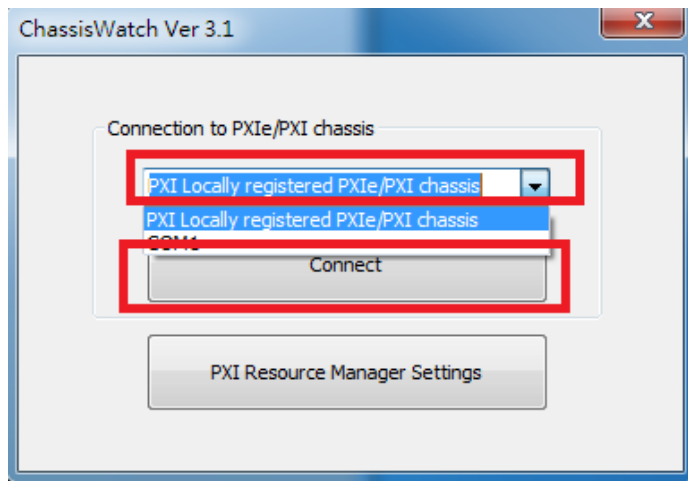


- c. For PXI Resource Manager and PXI Trigger Manager, select **ADLINK Technology**, then click **Apply**.



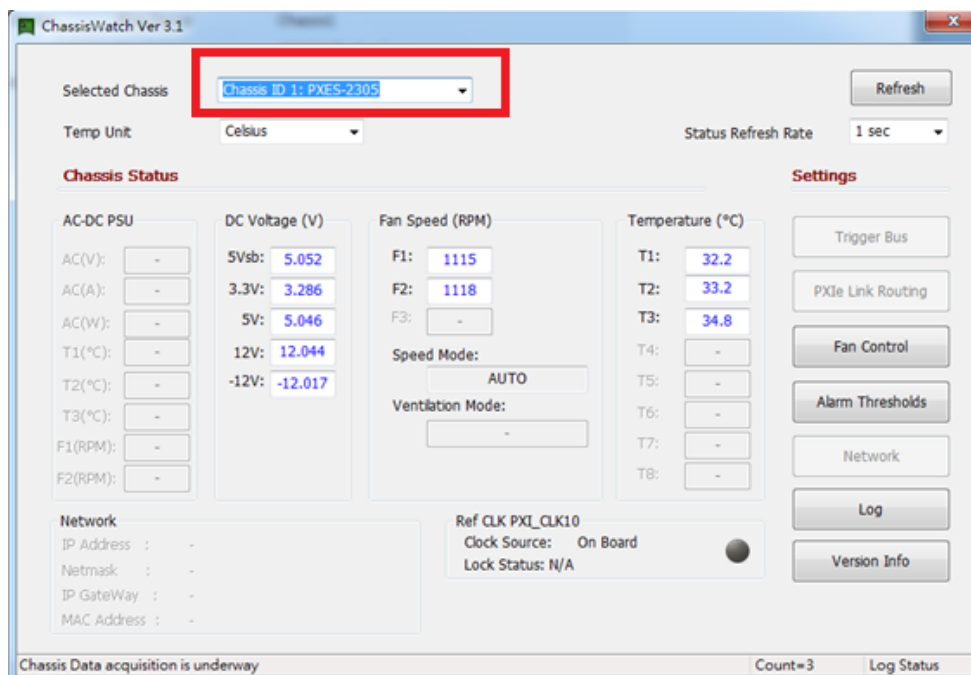


- d. Select **PXI Locally registered PXIe/PXI chassis**, then click **Connect** to launch the configuration interface of the Chassis Watch utility.

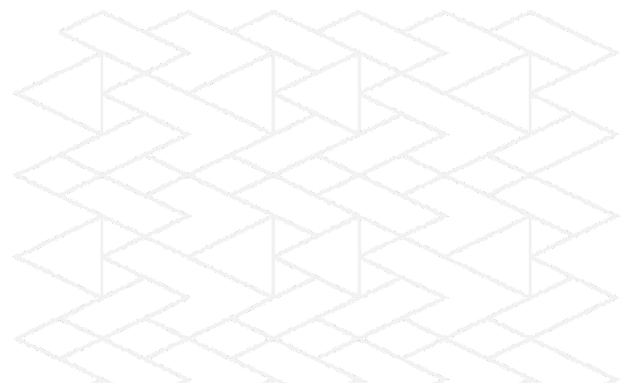
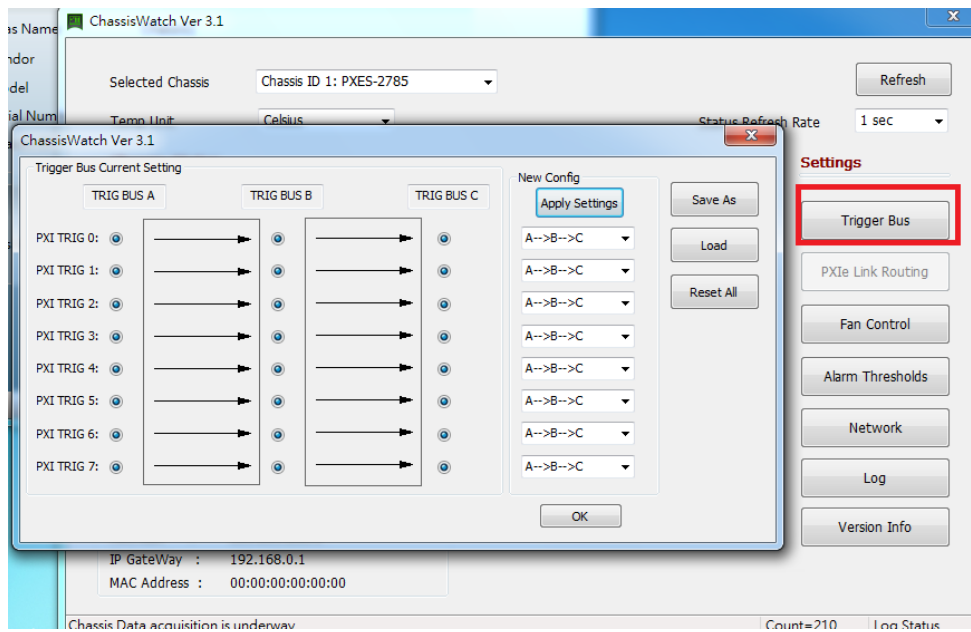


Step 2: Configure Settings

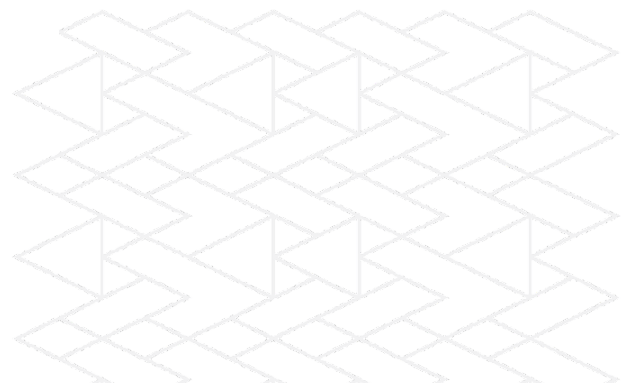
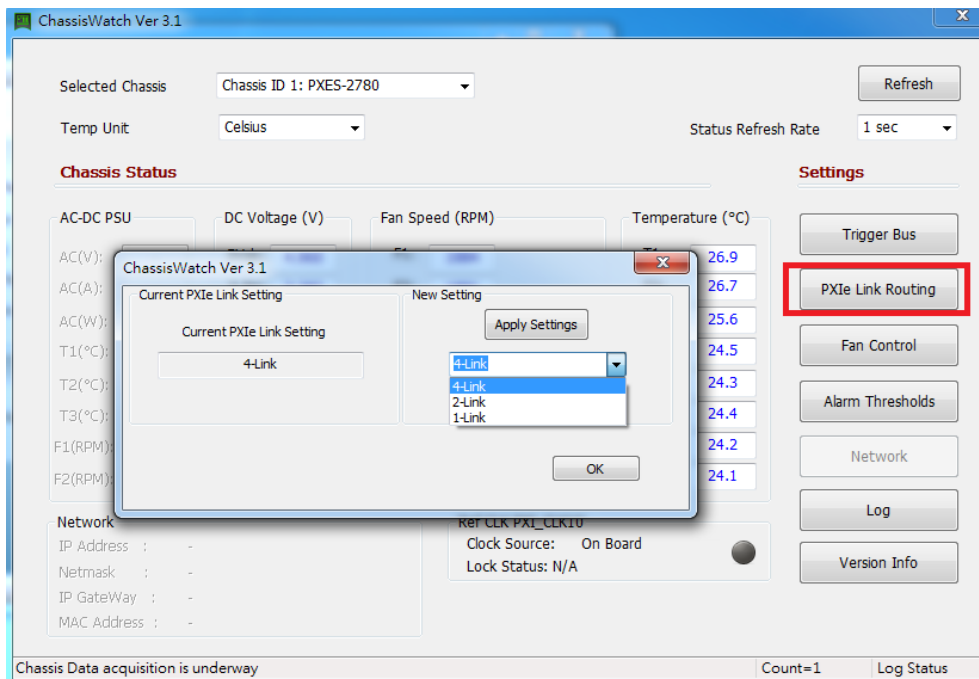
- a. Select the chassis



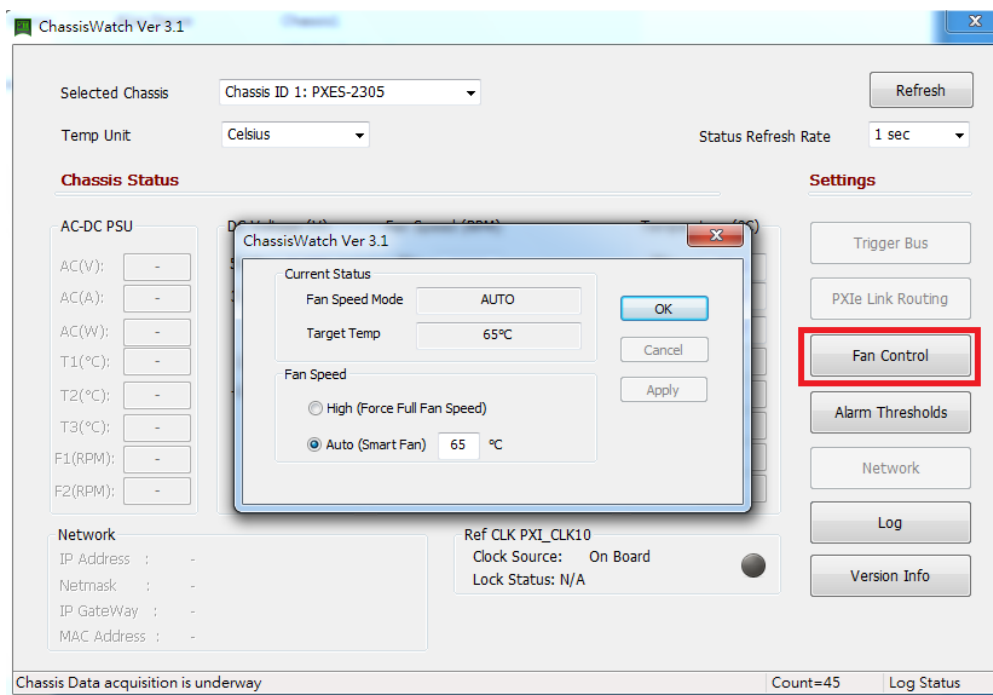
- b. Adjust the trigger bus settings
 - i. Click **Trigger Bus** to open the settings dialog
 - ii. Configure the settings as needed
 - iii. Click **Apply Settings** to apply



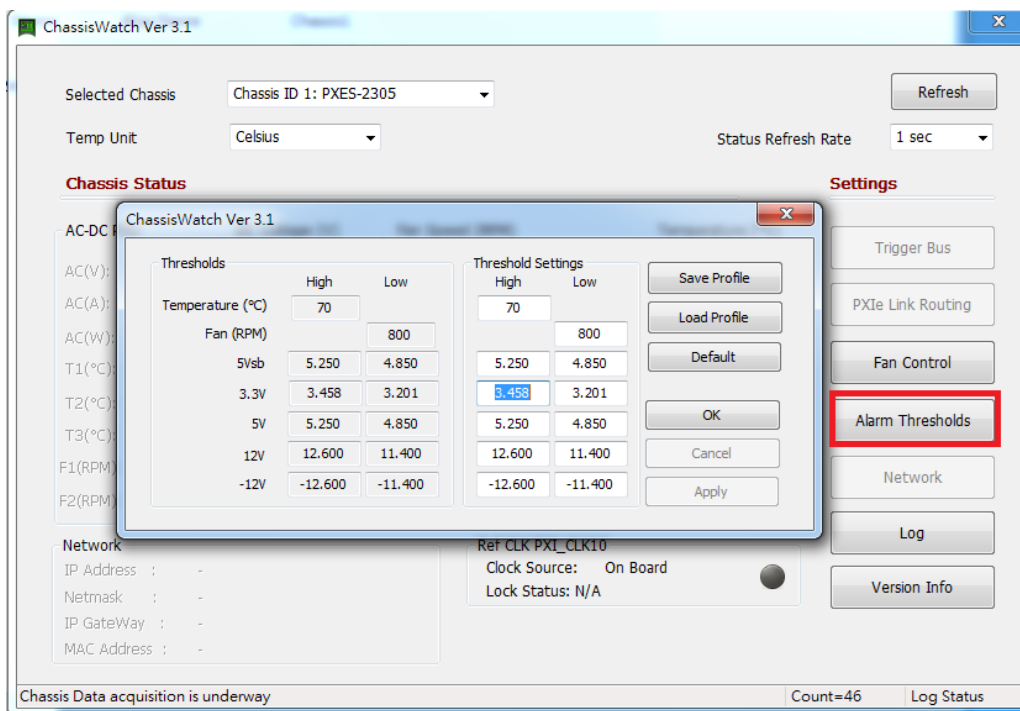
- c. Adjust link routing settings
- Click **PXie Link Routing** to open the settings dialog
 - Configure the PXie Link settings (only supports PXES-2780)
 - Click **Apply Settings** then click **OK**



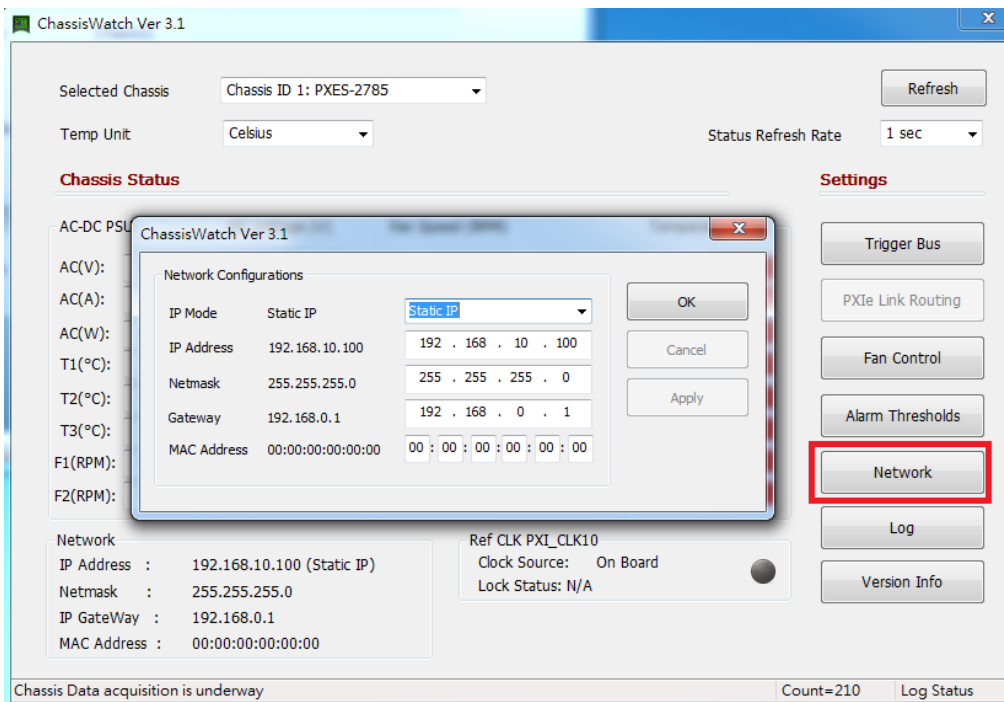
- d. Adjust fan speed settings
 - i. Click **Fan Control** button to open the fan settings dialog
 - ii. Select one of the fan settings
 1. **High** forces continuous full speed
 2. **Auto** activates the fan when the selected temperature is exceeded
 - iii. Click **OK** to save settings



- e. Adjust the high and low threshold settings
 - i. Click **Alarm Thresholds** to open the threshold settings dialog
 - ii. Adjust the temperature, fan speed, and DC voltage thresholds as needed
 - iii. Click **OK** to save settings

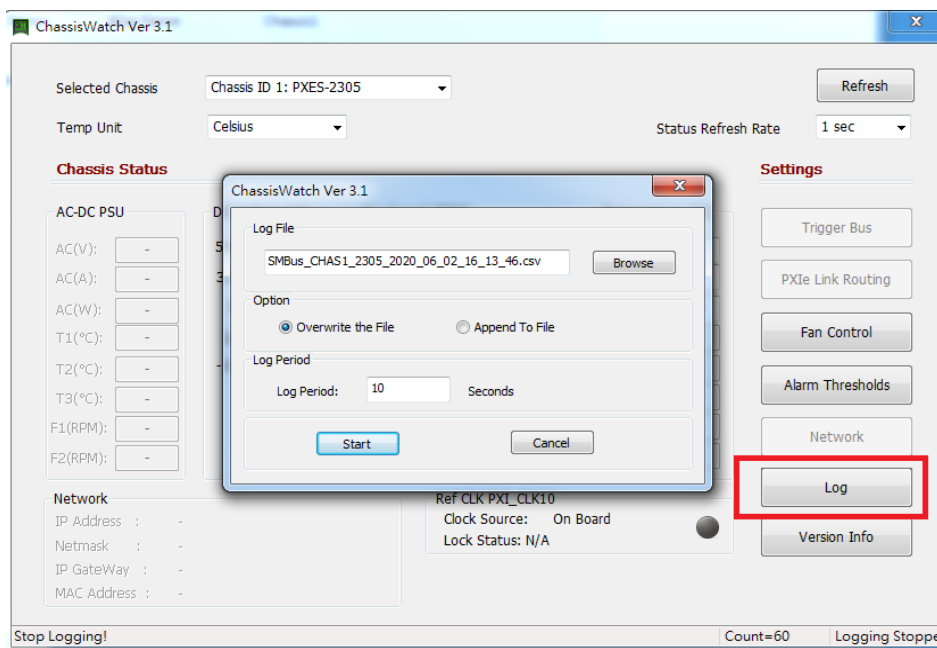


- f. Adjust network settings to enable remote control (only supports PXES-2785)
 - i. Click **Network** to open the network settings dialog
 - ii. Adjust network settings as needed
 - iii. Click **OK** to save settings



Step 3: Start Logging

- a. Configure and start to log the chassis information
 - i. Click **Log** to open the logging dialog
 - ii. Adjust settings as needed
 - iii. Click **Start** to begin logging



b. Click **Version Info** to display the ChassisWatch version.

